

BF

INDUSTRIAL SPRAY NOZZLES - SOLID CONE

SPRAY CHARACTERISTICS

- Uniform distribution of droplets in a solid cone spray pattern.
- Droplet size is larger than most hollow cone nozzles of equal capacity.
- Impact of spray is generally greater with narrower spray angles assuming the same flow rate. Pressure increases affect spray angle.

CONSTRUCTION AND MATERIALS

- One piece body with pressed in cross-milled core which is removable.
- Core imparts the necessary swirl to produce a solid cone spray pattern.
- Available in 30°, 60°, and 90° spray angles (see chart).
- Flanged design for use with standard bodies and caps.
- Body thread sizes are Male BSPT and Female BSPP.
- Standard flanged filters can be used.
- Available in Brass or Stainless Steel as standard.
- Other materials available on a special order.

ORDER EXAMPLE

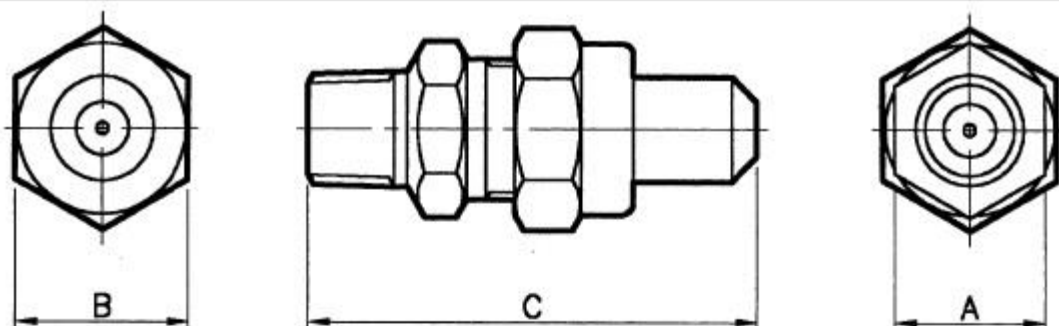
BR 4-90° Brass = Tip Only.

1/4" BFM (Male) 112-60° Stainless Steel = Complete Assembly.

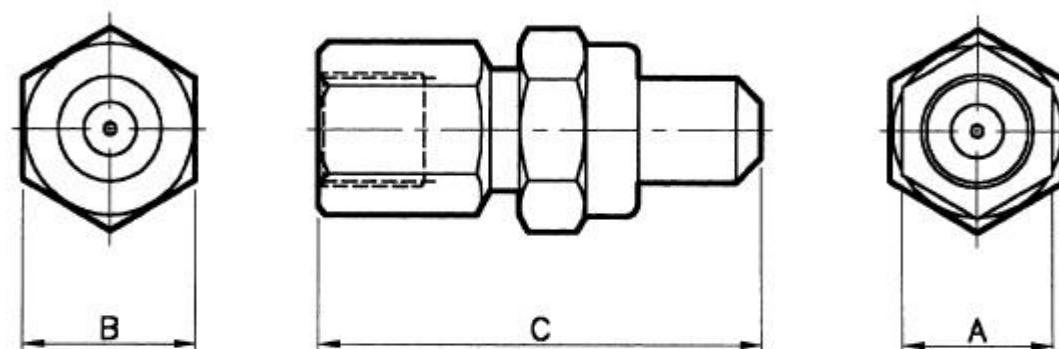
Maximum Recommended Pressure: 35 Bar.G.



CAPACITY CHARTS



BFM (MALE) ASSEMBLY



BFF (FEMALE) ASSEMBLY

DIMENSIONS AND WEIGHTS

Nozzle Thread	Dimensions (mm)			Weight (g)
	A	B	C	
1/8 BFF	18,0	20,8	54,0	70
1/8 BFM	18,0	20,8	52,4	60
1/4 BFF	18,0	20,8	54,0	70
1/4 BFM	18,0	20,8	54,0	62
3/8 BFF	20,8	20,8	54,0	70
3/8 BFM	18,0	20,8	54,0	64

CAPACITY CHART

NOZZLE NUMBER	FLOW RATE IN LITRES/MIN AT Bar.G.									AVAILABLE SPRAY ANGLES (°)		
	0,35	0,7	1,0	1,5	2	3	4	5	7	30	60	90
BF 1	-	0,38	0,45	0,56	0,64	0,78	0,86	0,94	1,14			
BF 2	-	0,76	0,89	1,11	1,26	1,54	1,71	1,87	2,27			
BF 3	0,8	1,14	1,34	1,67	1,90	2,32	2,57	2,81	3,41			
BF 4	1,07	1,52	1,79	2,22	2,53	3,10	3,42	3,75	4,54	*		
BF 5	1,33	1,90	2,23	2,78	3,15	3,86	4,28	4,68	5,68	*		
BF 6	1,6	2,29	2,68	3,34	3,79	4,64	5,13	5,62	6,81	*		
BF 8	2,13	3,05	3,57	4,44	6,28	6,18	6,84	7,49	9,08	*		
BF 10	2,67	3,81	4,40	5,56	6,31	7,72	8,56	9,36	11,35	*		
BF 12	3,20	4,57	5,36	6,67	7,58	9,28	10,27	11,24	13,62	*		
BF 16	4,27	6,10	7,14	8,90	10,10	12,37	13,73	14,98	18,16	*		

* Brass Only.