

BX

INDUSTRIAL SPRAY NOZZLES - SOLID CONE

SPRAY CHARACTERISTICS

- Uniform distribution of spray droplets in a solid cone pattern.
- Droplet size is larger than in hollow cone nozzles of equal capacity.
- Purpose designed for continuous casting applications.
- Available spray angles of 50°, 65°, 80°, 90° and 120°.

CONSTRUCTION AND MATERIALS

- The nozzle uses a standard cross-milled core design.
- The cross-milled core is pressed into place and is removable.
- Inlet thread is 3/8" BSPP Female.
- Brass and Stainless Steel are standard.
- Other materials are available on a special order.

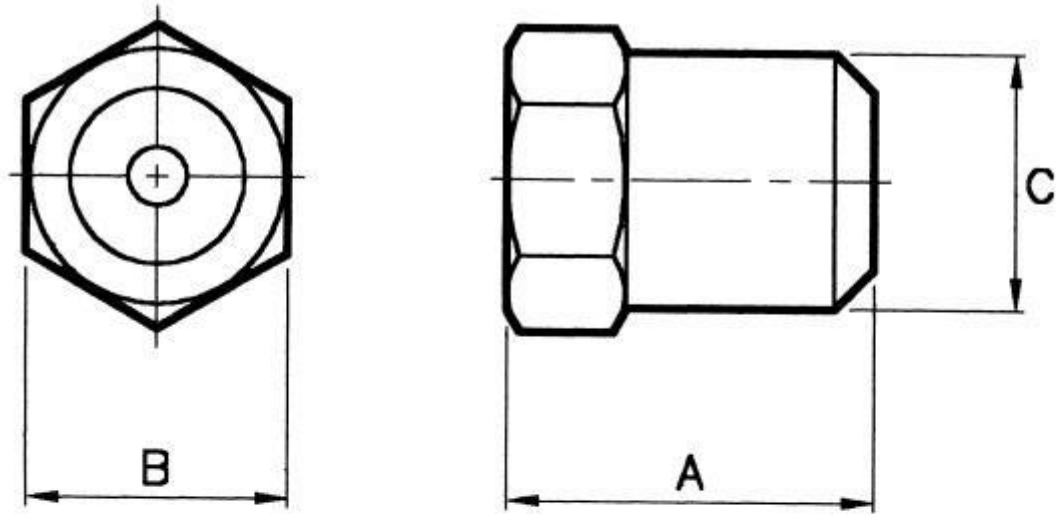
ORDER EXAMPLE

3/8" BX 40-80°, Stainless Steel.

Maximum Recommended Pressure: 35 Bar.G.



CAPACITY CHARTS



DIMENSIONS AND WEIGHTS

<i>Nozzle Number</i>	<i>Dimensions (mm)</i>			<i>Weight (g)</i>
	<i>A</i>	<i>B Hex</i>	<i>C</i>	
BX40 - BX90	24,0	20,8	20,2	40
BX100 - BX160	35,0	20,8	20,2	55

CAPACITY CHART

NOZZLE NUMBER	FLOW RATE IN LITRES/MIN AT Bar.G.								
	1,0	1,5	2,0	2,5	3,0	4,0	5,0	6,0	7,0
BX 40	2,31	2,38	3,27	3,65	4,0	4,62	5,10	5,62	6,11
BX 45	2,60	3,18	3,67	4,11	4,5	5,20	5,74	6,31	6,86
BX 50	2,89	3,54	4,08	4,56	5,0	5,77	6,37	7,05	7,61
BX 55	3,18	3,89	4,49	5,02	5,5	6,35	7,01	7,75	8,38
BX 60	3,46	4,24	4,90	5,48	6,0	6,93	7,65	8,46	9,15
BX 65	3,75	4,670	5,31	5,93	6,5	7,51	8,29	9,16	9,91
BX 70	4,04	4,95	5,71	6,93	7,0	8,08	8,92	9,87	10,66
BX 80	4,62	5,66	6,53	7,30	8,0	9,24	10,20	11,28	12,19
BX 90	5,20	6,36	7,35	8,22	9,0	10,39	11,47	12,69	13,71
BX 100	5,77	7,07	8,16	9,13	10,0	11,55	12,75	14,10	15,25
BX 110	6,35	7,80	8,98	10,04	11,0	12,70	14,02	15,51	16,78
BX 120	6,93	8,49	9,80	10,95	12,0	13,86	15,30	16,92	18,31
BX 140	8,08	9,90	11,42	12,78	14,0	16,16	17,84	19,74	21,32
BX 160	9,24	11,32	13,06	14,60	16,0	18,48	20,40	22,56	24,38