

## BLOW-OFF

### INDUSTRIAL SPRAY NOZZLES - FLAT SPRAY

#### SPRAY CHARACTERISTICS

- Directs compressed air or steam in a wide, thin air sheet.
- Designed with a relatively large slotted orifice.

#### CONSTRUCTION AND MATERIALS

- Available in Brass and Stainless Steel (recommended for steam applications).
- 3 piece constructions, body, tip and cap.
- The tip has two flats to facilitate alignment.
- Optional body is available in a variety of threads.
- Thread sizes are Male BSPT and Female BSPP.
- Other materials are available to special order.

#### ORDER EXAMPLE

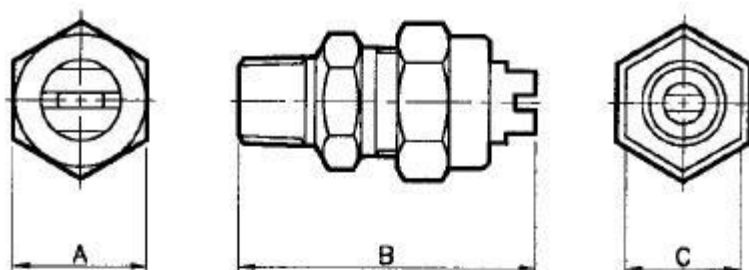
No. 4 Blow-Off Brass = Tip only.

1/4" Male No. 3 Blow-Off Stainless Steel = Complete Assembly.

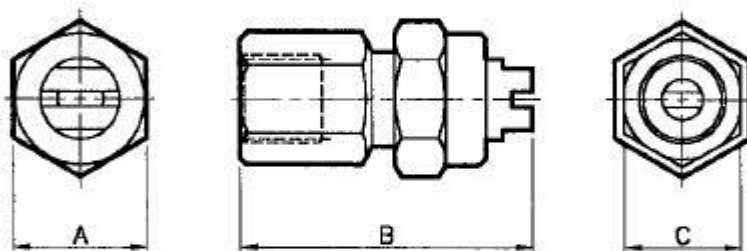
Maximum Recommended Pressure: 14 Bar.G.



## CAPACITY CHARTS



BLOW-OFF (MALE) ASSEMBLY



BLOW-OFF (FEMALE) ASSEMBLY

### DIMENSIONS AND WEIGHTS

| Thread Type | Assembly Type | Dimensions (mm) |      |       | Weight (g) |
|-------------|---------------|-----------------|------|-------|------------|
|             |               | A Hex           | B    | C Hex |            |
| 1/8         | Female        | 20,8            | 46,0 | 18,0  | 69         |
| 1/4         | Male          | 20,8            | 46,0 | 18,0  | 61         |
| 1/4         | Female        | 20,8            | 46,0 | 18,0  | 68         |
| 3/8         | Male          | 20,8            | 46,0 | 18,0  | 63         |
| 3/8         | Female        | 20,8            | 46,0 | 20,8  | 69         |

### AIR CAPACITY CHART

| NOZZLE NUMBER | AIR FLOW IN M <sup>3</sup> /HOUR AT Bar.G. |      |      |       | APPROX. SPRAY ANGLES (°) |
|---------------|--|------|------|-------|--------------------------|
|               | 0,7  | 2    | 4    | 7     |                          |
| No. 1         | 1,1  | 2,4  | 4    | 6,4   | 75°                      |
| No. 2         | 2,1  | 4,6  | 7,5  | 11,6  | 55°                      |
| No. 3         | 6,2  | 12,2 | 19,5 | 28,4  | 60°                      |
| No. 4         | 10,0                                       | 20,1 | 32,3 | 47,6  | 100°                     |
| No. 5         | 22,4                                       | 46,7 | 72,2 | 105,5 | 60°                      |

## STEAM CAPACITY CHART

| <b>NOZZLE<br/>NUMBER</b> | <b>STEAM FLOW IN Kg/HOUR AT Bar.G.</b> |          |          |          | <b>APPROX.<br/>SPRAY<br/>ANGLES (°)</b> |
|--------------------------|--|----------|----------|----------|---|
|                          | <b>0,7</b>                             | <b>2</b> | <b>4</b> | <b>7</b> |   |
| No. 1                    | 0,54                                   | 1,27     | 2,08     | 3,72     | 75°                                     |
| No. 2                    | 1,27                                   | 2,35     | 4,08     | 7,26     | 55°                                     |
| No. 3                    | 3,5                                    | 6,12     | 10,3     | 17,2     | 60°                                     |
| No. 4                    | 5,76                                   | 10,2     | 17,2     | 29,3     | 100°                                    |
| No. 5                    | 12,7                                   | 22,9     | 38,6     | 64,9     | 60°                                     |