

DE

## INDUSTRIAL SPRAY NOZZLES - FLAT SPRAY

### SPRAY CHARACTERISTICS

- Produces highly uniform flat spray at pressures up to 4000 PSIG (275 Bar.G.)
- Maximum impinging force is produced with a minimum loss of energy resulting in higher efficiency.
- Spray pattern has knife-like cutting edge.
- Available spray angles of 25° and 32°.

### CONSTRUCTION AND MATERIALS

- Unique connection nozzle/body for positive alignment.
- Cap, mild steel.
- Orifice assembly, tungsten carbide orifice for maximum wear resistance.
- Strainer available in several styles.
- Body, mild steel with 3/4" - 14 NPTM threads and 1" - 11 - 1/2" NPTM threads or welding nipple type.
- Cap and body also available in 303 Stainless Steel by special order.

### ORDER EXAMPLE

DE 30-32° = Tip and Strainer Assembly Only.

1" DEM 60-25° Stainless Steel = Complete Assembly.

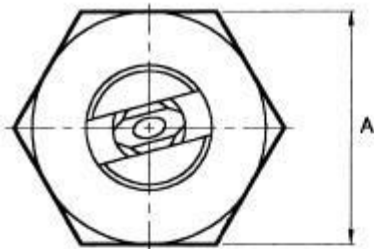
DEW 40-32° Stainless Steel = Welding Assembly.

Maximum Recommended

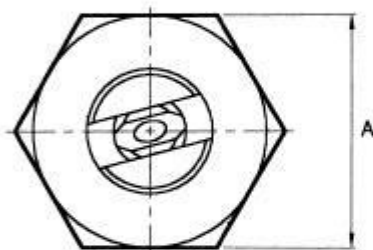
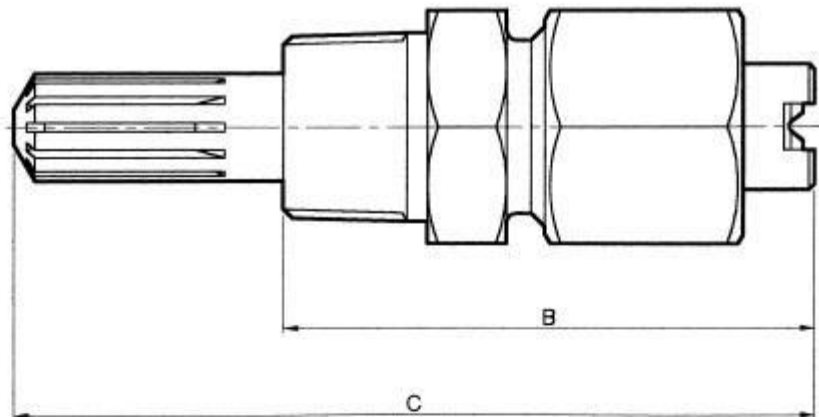
Pressure: 275 Bar.G.}



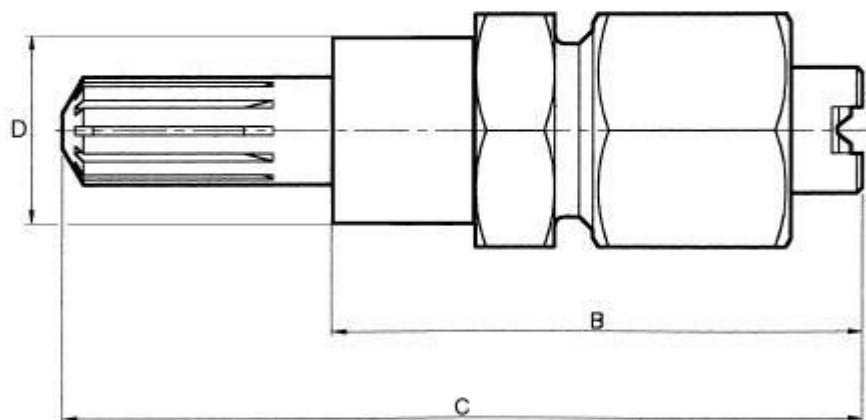
## CAPACITY CHARTS



DEM



DEW



### DIMENSIONS AND WEIGHTS

Assembly Type	Dimensions (mm)				Weight (g)
	A Hex	B	C	D dia	
3/4" DEM	41,3	79,2	114,3	-	553
1" DEM	41,3	79,2	114,3	-	624
DEW	41,3	79,2	114,3	33,4	624

<b>Nozzle Height (mm)</b>	<b>Coverage (mm) at 70 Bar.G.</b>	
	<b>25°</b>	<b>32°</b>
200	125	150
225	135	165
250	155	180
275	165	190
300	180	205
325	185	220
350	195	235
400	220	250
450	240	285
500	255	300
550	270	315
600	280	320

## CAPACITY CHART

<b>NOZZLE NUMBER</b>	<b>Equiv. Orifice Dia. (mm)</b>	<b>FLOW RATE IN LITRES/MIN AT Bar.G. - FOR BOTH 25° AND 32°</b>														
		<b>40</b>	<b>55</b>	<b>70</b>	<b>85</b>	<b>100</b>	<b>110</b>	<b>125</b>	<b>140</b>	<b>150</b>	<b>165</b>	<b>180</b>	<b>195</b>	<b>210</b>	<b>240</b>	<b>275</b>
DE 20	2,8	29	34	38	42	45	48	51	54	56	59	61	64	66	71	76
DE 30	3,6	43	51	57	63	68	72	78	81	84	88	92	95	99	106	113
DE 40	4,0	57	68	76	84	91	96	102	109	112	117	122	127	133	141	151
DE 50	4,4	72	85	95	105	114	119	127	135	140	147	153	159	166	177	189
DE 60	4,8	86	102	114	127	135	142	152	160	166	174	182	190	198	212	227
DE 70	5,2	102	117	132	144	155	167	178	189	197	204	212	219	231	246	265