

## SPRAY CHARACTERISTICS

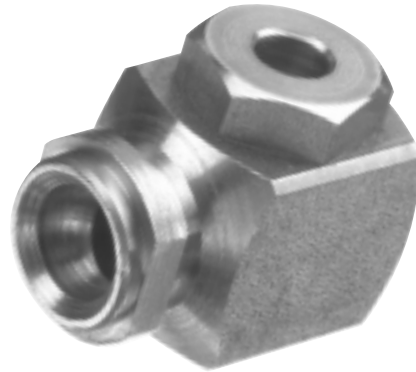
- Uniform hollow cone spray pattern.
- Atomisation becomes finer at higher pressures.
- Spray angle is 70°.

## CONSTRUCTION AND MATERIALS

- Right angle configuration, quick attach body with no internal vanes.
- Unique swirl chamber with single inlet and large passageways to provide a more uniform spray and to reduce chances of clogging.
- Available in Brass and 316 Stainless Steel.

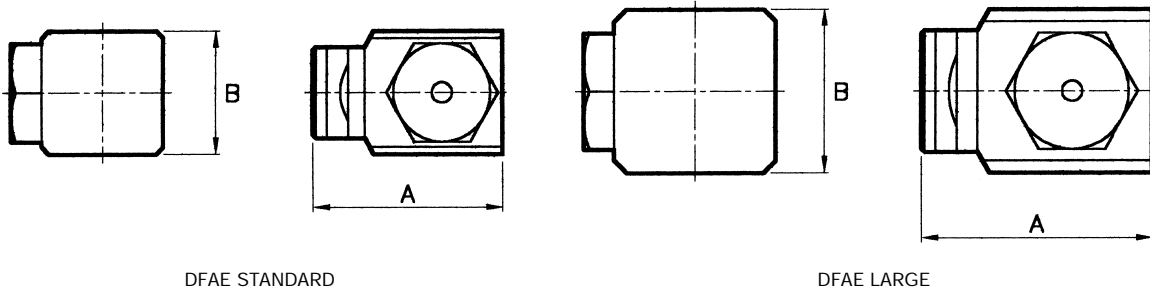
## ORDER EXAMPLE

DFAE 20 Brass.



### DIMENSIONS (mm)

Nozzle Size	A	B Sq
DFAE STANDARD	30,0	19,0
DFAE LARGE	36,5	25,4



DELA-FIT

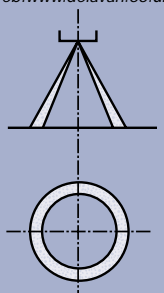
TYPE DFAE

## CAPACITY CHART

NOZZLE NUMBER	BODY SIZE*		FLOW RATE IN LITRES/MIN AT Bar.G.							
	S	L	0,7	1,0	2,0	3,0	4,0	5,0	6,0	7,0
DFAE 6			1,14	1,3	1,9	2,4	2,7	3,1	3,4	3,6
DFAE 10			1,92	2,3	3,2	3,9	4,6	5,1	5,6	6,0
DFAE 15			2,84	3,4	4,8	5,9	6,8	7,6	8,4	9,0
DFAE 20			3,80	4,5	6,4	7,9	9,1	10,2	11,2	12,1
DFAE 25			4,76	5,7	8,1	9,9	11,4	12,7	14,0	15,1
DFAE 30			5,72	6,9	9,7	11,8	13,7	15,3	16,8	18,1
DFAE 40			7,60	9,1	12,9	15,8	18,2	20,4	22,3	24,1
DFAE 50			9,51	11,4	16,1	19,7	22,8	25,5	27,9	30,2
DFAE 60			11,44	13,6	19,3	23,7	27,3	30,6	33,5	36,2
DFAE 80			15,23	18,2	25,8	31,6	36,5	40,8	44,7	48,2
DFAE 100			19,08	22,8	32,2	39,5	45,6	41,0	55,8	60,3
DFAE 125			23,84	28,5	40,3	49,4	57,0	63,7	69,8	75,4
DFAE 150			28,59	34,2	48,3	59,2	68,4	76,4	83,7	90,5
DFAE 200			38,16	45,6	64,5	79,0	91,2	102	112	122

\*S = for use with 1/4" or 3/8" Dela-Fit Bodies. L = for use with 1/2" Dela-Fit Bodies.

Contact our Helpline for any special requirements:  
Tel: +44 (0) 151 424 6821  
Fax: +44 (0) 151 495 1043  
e-mail: sales@delavan.co.uk  
Web: www.delavan.co.uk



DF