



SPRAY CHARACTERISTICS

- Produces a wide, flat spray pattern with uniform distribution.
- Low impact spray with low atomisation at low pressures.
- Nominal spray angle is 120° or more depending on size.

CONSTRUCTION AND MATERIALS

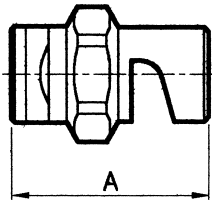
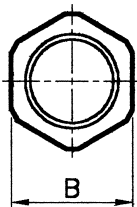
- Hexagonal one piece quick attach body.
- Simple deflector type design producing spray at 75° spray angle from inlet orifice.
- Resistant to clogging.
- Available in Brass and 316 Stainless Steel.

ORDER EXAMPLE

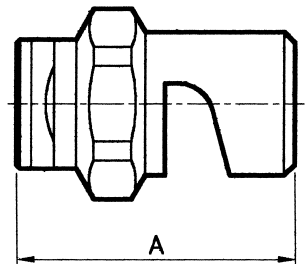
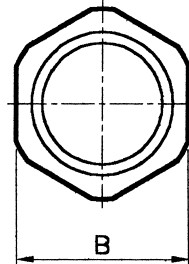
DFAN 10 Stainless Steel.

DIMENSIONS (mm)

Nozzle Size	A	B Hex
DFAN 5-20	29,4	18,0
DFAN 25-40	34,9	18,0
DFAN LARGE	41,3	25,7



DFAN STANDARD



DFAN LARGE

CAPACITY CHART

NOZZLE NUMBER	BODY SIZE*		FLOW RATE IN LITRES/MIN AT Bar.G.							
	S	L	0,35	0,5	0,7	1,0	1,5	2,0	3,0	4,0
DFAN 5			1,33	1,61	1,92	2,28	2,79	3,21	3,94	4,42
DFAN 7,5			2,01	2,40	2,84	3,39	4,36	4,91	5,92	6,70
DFAN 10			2,70	3,23	3,81	4,46	5,49	6,29	7,91	9,38
DFAN 15			4,16	4,99	5,67	6,70	8,24	9,64	11,8	13,8
DFAN 18			5,03	5,70	6,86	8,17	9,94	11,6	14,2	16,4
DFAN 20			5,35	6,56	7,59	8,93	11,0	13,0	15,7	18,3
DFAN 25			6,86	8,09	9,61	11,6	13,8	16,1	16,1	22,8
DFAN 30			8,00	9,70	11,4	13,8	16,6	19,0	23,7	27,2
DFAN 35			9,60	16,6	13,3	15,6	19,4	22,7	27,5	32,1
DFAN 40			10,6	12,7	15,2	18,3	22,4	25,7	31,5	36,4
DFAN 50			13,3	16,2	19,0	22,7	28,0	32,0	39,4	46,4
DFAN 60			16,0	19,2	22,9	27,2	33,6	38,7	47,3	54,6
DFAN 75			20,2	24,2	28,6	34,2	41,8	48,3	59,2	68,4
DFAN 80			21,3	25,9	30,5	36,4	44,6	51,3	63,1	72,9
DFAN 100			27,0	32,3	38,1	45,4	55,6	64,3	78,9	91,1

*S = for use with 1/4" or 3/8" Dela-Fit Bodies. L = for use with 1/2" Dela-Fit Bodies.

