

DQ

## INDUSTRIAL SPRAY NOZZLES - FLAT SPRAY

### SPRAY CHARACTERISTICS

- Produces highly uniform flat spray at high pressures.
- Maximum impinging force is produced with a minimum loss of energy resulting in higher efficiency.
- Spray pattern has knife-like cutting edge.
- Normal spray angles of 25° and 32°.
- Orifice insert is offset 15° to axis of dovetail.

### CONSTRUCTION AND MATERIALS

- Dovetail connection nozzle/body for positive alignment.
- 3 piece design with Male NPT thread or Welding Nipple body, available in:
  - Stainless Steel bodies and cap.
  - Mild Steel (Welding Nipple body only.)
  - Longer Welding Nipple bodies available to special order.
- Nozzle is Stainless Steel with Tungsten Carbide orifice insert.
- Tips, bodies and cap can be ordered separately in different materials.
- Threaded bodies are 3/4" or 1" Male NPT only.
- Other materials available to special order.

### ORDER EXAMPLE

DQ 20-32° = Tip Only.

3/4" DQM 40-25° Stainless Steel = Complete Assembly.

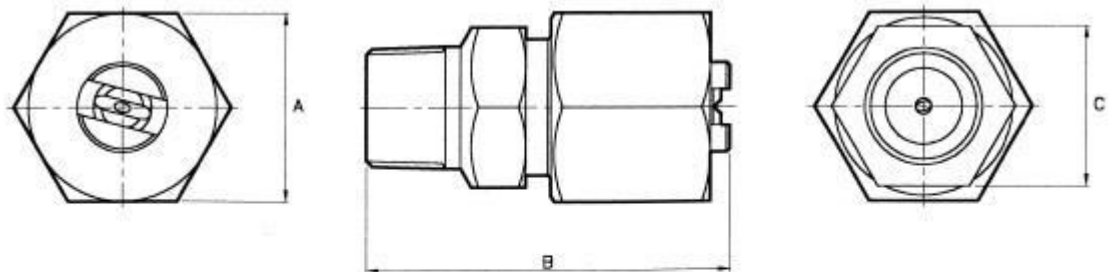
DQW 60-32° Stainless Steel = Welding Assembly.

Note:- This nozzle type is also available as the DE type design with strainer and flow stabiliser.

Maximum Recommended Pressure: 275 Bar.G.}



## CAPACITY CHARTS



### DIMENSIONS AND WEIGHTS

Assembly Type	Dimensions (mm)			Weight (g)
	A Hex	B	C Hex	
3/4" DQM	41,3	79,2	38,0	504
1" DQM	41,3	79,2	38,0	561
DQW	41,3	70,0	35,0 dia.	420

Nozzle Height (mm)	Coverage (mm) at 70 Bar.G.	
	25°	32°
200	125	150
225	135	165
250	155	180
275	165	190
300	180	205
325	185	220
350	195	235
400	220	250
450	240	285
500	255	300
550	270	315
600	280	320

## CAPACITY CHART

Nozzle Number	Equiva. Orifice Dia. (mm)	FLOW RATE IN LITRES/MIN AT Bar.G. - FOR BOTH 25° AND 32°														
		40	55	70	85	100	110	125	140	150	165	180	195	210	240	275
DQ 6	1,5	8,7	10,2	11,5	12,6	13,7	14,4	15,3	16,2	16,8	17,6	18,4	19	20	21	23
DQ 10	2,0	15	17	19	21	23	24	26	27	28	30	31	32	33	35	38
DQ 12,5	2,2	18	21	24	26	29	30	32	34	35	37	38	40	41	44	47
DQ 15	2,4	22	25	28	31	34	36	39	40	42	44	46	48	49	53	57
DQ 20	2,8	29	34	38	42	45	48	51	54	56	59	61	64	66	71	76
DQ 30	3,6	43	51	57	63	68	72	78	81	84	88	92	95	99	106	113
DQ 40	4,0	57	68	76	84	91	96	102	109	112	117	122	127	133	141	151
DQ 50	4,4	72	85	95	105	114	119	127	135	140	147	153	159	166	177	189
DQ 60	4,8	86	102	114	127	135	142	152	160	166	174	182	190	198	212	227
DQ 70	5,2	102	117	132	144	155	167	178	189	197	204	212	219	231	246	265