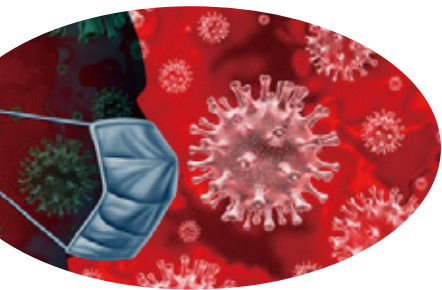




Fever Screening System

Hotfind-S



SATIR

SATIR Europe (Ireland) Company Limited

Marley's Business Park, Marley's Lane, Drogheda,

Co. Louth, A92 PX6P, Ireland

Tel: +353 (0)41 9846786

E-mail: enquiry@satir.com

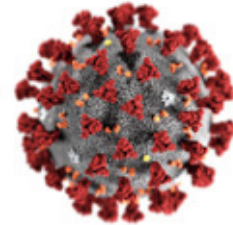
Copyright © SATIR Europe (Ireland) Company Limited 2020. All rights reserved.
The specifications and descriptions of products and services contained in this catalogue were correct at the time of publishing. SATIR reserves the right to change specifications or withdraw products without notice.

www.satir.com

SATIR

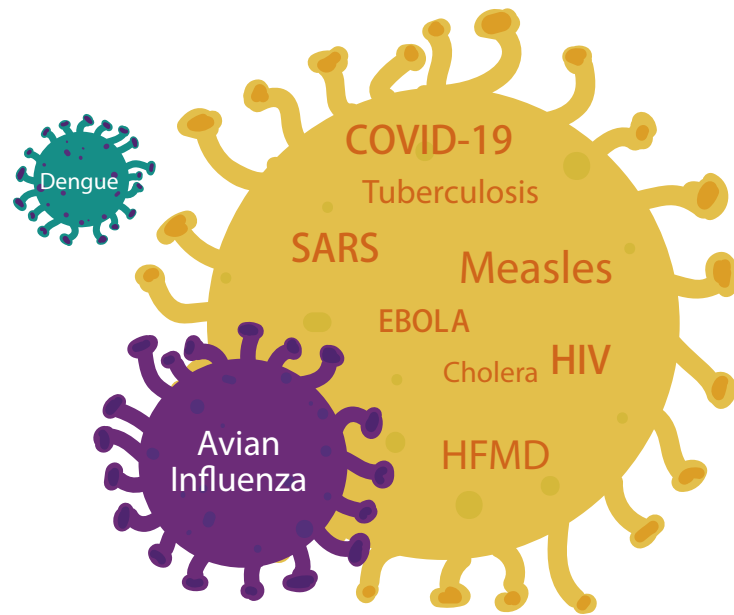
Background

Coronavirus disease (COVID-19) is an infectious disease caused by a new virus. The disease causes respiratory illness (like the flu) with symptoms such as a high fever, cough, and in more severe cases, difficulty breathing.



How it spreads?

Coronavirus disease spreads primarily through contact with an infected person when they cough or sneeze. It also spreads when a person touches a surface or object that has the virus on it, then touches their eyes, nose, or mouth.

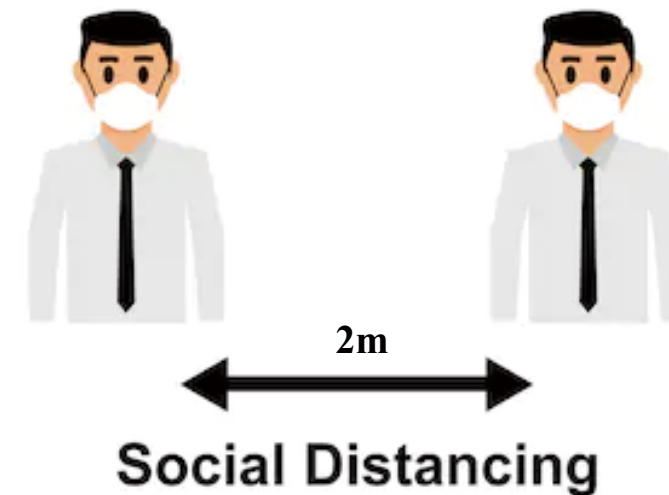
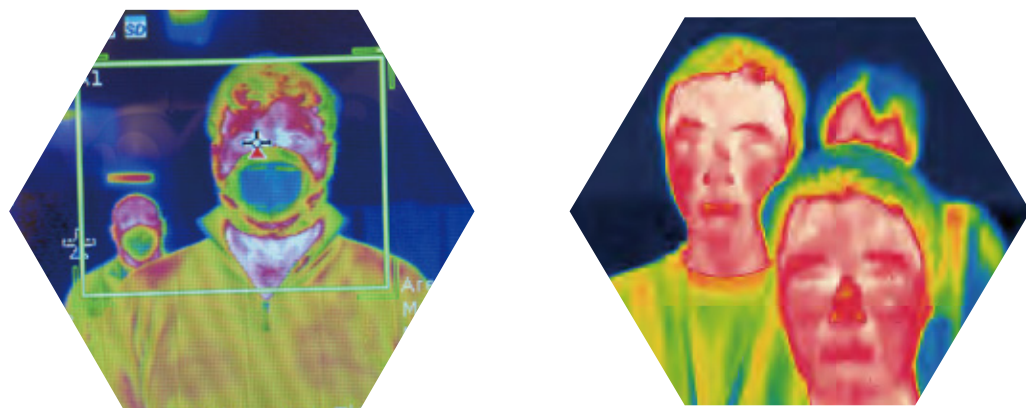


Common Symptoms of COVID-19:

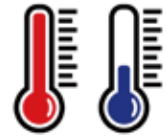
A fever (high temperature 38 degrees Celsius or above)



Principles for Preventing and Controlling Infections of COVID-19



Key Features



High Accuracy $\pm 0.5^{\circ}\text{C}$

Provides high measuring accuracy within a distance of up to 2 meters
Accurately scan skin temperature of any individual in the crowd



Super Fast

Real-time screening system, the camera does not cause any delays
Response time $< 0.05\text{S}$ with Audio alarm



Easy to Operate

Compact and Rugged design, the camera can integrate into any application less than 15 minutes



Reliable & Trusted Partner

30 Years experience in the market
Two Years Warranty for all SATIR cameras



Applications



School



Airport



Custom



Hospital



Factory



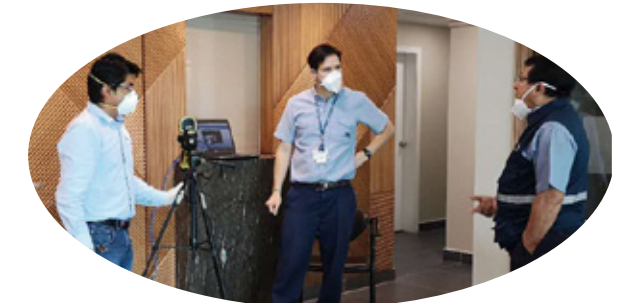
Shopping Center



Train Station



Office



Hotfind-S Specification

Thermal Camera	
Detector Type	Uncooled FPA Microbolometer
Effective Resolution	384x288
Thermal Sensitivity (NETD)	< 0.04°C@30°C
Spectral Range	8~14um
Frame Rate	25/30Hz
Color Palettes	Iron/White hot/Black hot/Rainbow/Feather
Accuracy	±0.5°C
Temperature range	10°C to 60°C
Measurement Distance	0.10m to 2m
Reading mode	Auto capture max./min./avg. temperature and Area temperature measurement
Thermal Lens	
Lens Type	Manual
Focus Control	Manual Focus
FOV	24°x18°
Visible Camera	
Image Sensor	1/1.9" Sony CMOS
Effective Resolution	5 MP
Power Supply	
Battery	Li-ion 3.7V/5900mAh, 3 hours charging time-5V/2A
Operation time	≧ 5 Hours/Support DC power supply
Physical Characteristics	
Size	232x115x168mm
Weight	≤990g
IP/Drop Standard	IP54, 1-meter drop approved
Operating Temperature	-20°C ~ 35°C
Storage Temperature	-40°C ~ 70°C
Humidity	10% ~ 90%, non-condensing
Standard Packing List	
Camera*1, Battery*1, Battery charger*1, USB cable*1, USB extend cable*1, 16GB SD Card*1, AV cable*1, HDMI Cable*1, User Manual*1, Calibration report*1	

