

UC

## INDUSTRIAL SPRAY NOZZLES - SPECIAL PURPOSE

### SPRAY CHARACTERISTICS

- *Produces a hollow cone spray pattern with uniform distribution.*
- *Has a narrower droplet spectrum than equivalent solid cone sprays.*

### CONSTRUCTION AND MATERIALS

- *\*Manufactured in Silicon Carbide, Nitride bonded (SiC).*
- *Clog resistant design with no internal vanes or cones.*
- *Uses 'Canted Bottom' design of swirl chamber for maximum wear resistance.*
- *Ideal for Gas washing and cooling where high temperatures, together with corrosive and abrasive elements, are present.*
- *Manufactured in flanged version only.*
- *Mounting flanges as per ANSI 150.*

### ORDER EXAMPLE

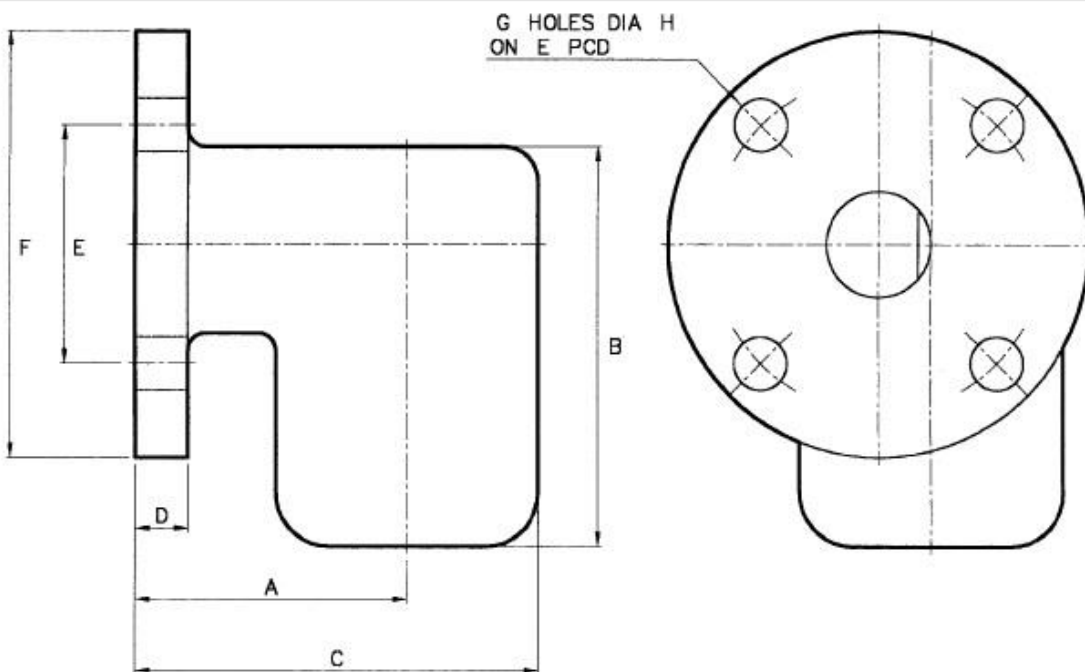
3" UC 250-FL.

Max Recommended Pressure: 7 Bar.G.

Max Recommended Temperature: 1650 °C



## CAPACITY CHARTS



### DIMENSIONS AND WEIGHTS

<b>Size (N.B.)</b>	<b>A</b>	<b>B</b>	<b>C</b>	<b>D</b>	<b>E</b>	<b>F</b>	<b>G</b>	<b>H</b>	<b>Weight (Kg)</b>
2"	98,4	140	148	19	121	152	4	19	2,69
2½"	98,4	190	148	22	140	178	4	19	4,66
3"	127	225	210	24	152	191	4	19	7,45
4"	152	269	252	24	191	229	8	19	13,4